



Road Running Technical Council
USA Track & Field

Measurement Certificate



Name of the course WDW 10k 2023 Distance 10 km

Location (state) FL (city) Lake Buena Vista

Type of course: Road Race

Measuring Methods: Bicycle

Measured By Jonathan Branson, 50 Lakeview Reserve Blvd, Winter Garden FL 34787 jbranson@acromic.com 321-312-078

Race Contact Jon Hughes, 1013 Montana St Orlando FL 32803 407-896-1160

Date(s) when course measured: 03/05/2021, 11/22/2022

Number of measurements of entire course: 2 Course Configuration: partial loop

Elevation (meters above sea level) Start 28.96 Finish 30.18 Lowest 28.96 Highest 35.36

Straight line distance between start and finish 309.07m Drop -0.12 m/km Separation 3.09 %

Type of surface: Paved 100 % Dirt 0 % Gravel 0 % Grass 0 % Track 0 %

Effective date of certification: December 20, 2022 Certification code: FL21050JK

Note to Race Director: Use this Certification Code in all public announcements relating to your race.

Be It Officially Noted That

Based on examination of data provided by the above named measurer, the course described above and in the map attached is hereby certified as reasonably accurate in measurement according to the standards adopted by the Road Running Technical Council. If any changes are made to the course, this certification becomes void, and the course must then be recertified.

Verification of Course --- In the event a National Open Record is set on the course, or at the discretion of USA Track & Field, a verification measurement may be required to be performed by a member of the Road Running Technical Council. If such a remeasurement shows the course to be short, then all pending records will be rejected and the course certification will be cancelled.

This certification expires on December 31 of the year: **2031**

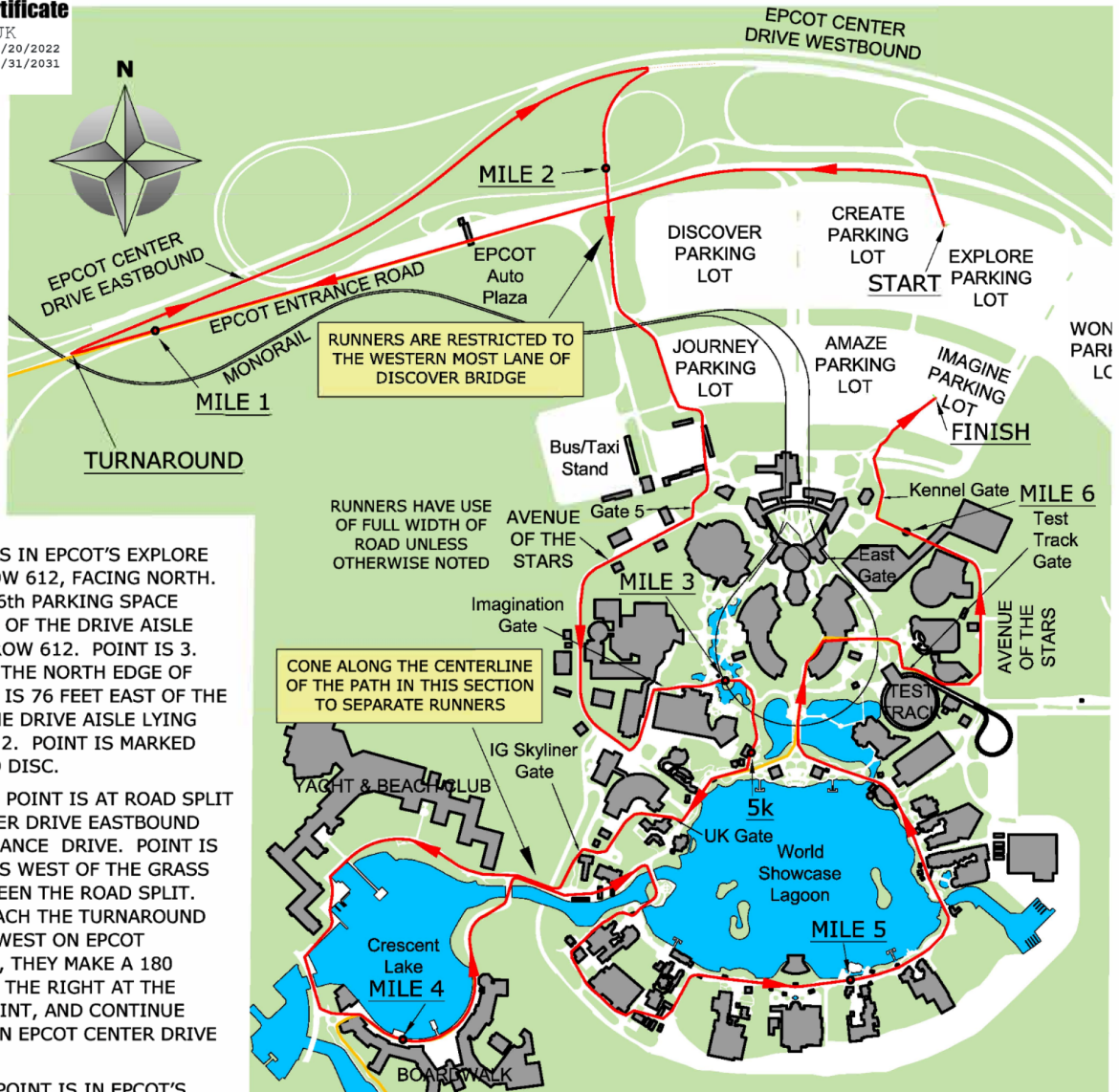
AS NATIONALLY CERTIFIED BY:

Date: December 26, 2022

Justin Kuo - USATF/RRTC Certifier - 39 Oakland Rd, Brookline MA 02445
(617) 487-4463 - jkuo+certifier@usatfne.org



USATF Certificate
 FL21050JK
 Effective: 12/20/2022
 Through: 12/31/2031



START - POINT IS IN EPCOT'S EXPLORE PARKING LOT, ROW 612, FACING NORTH. POINT IS IN THE 6th PARKING SPACE FROM EAST EDGE OF THE DRIVE AISLE LYING WEST OF ROW 612. POINT IS 3.6 FEET SOUTH OF THE NORTH EDGE OF ROW 612. POINT IS 76 FEET EAST OF THE EAST EDGE OF THE DRIVE AISLE LYING WEST OF ROW 612. POINT IS MARKED WITH A NAIL AND DISC.

TURNAROUND - POINT IS AT ROAD SPLIT FOR EPCOT CENTER DRIVE EASTBOUND AND EPCOT ENTRANCE DRIVE. POINT IS 56 FEET, 3 INCHES WEST OF THE GRASS MEDIAN IN BETWEEN THE ROAD SPLIT. RUNNERS APPROACH THE TURNAROUND POINT RUNNING WEST ON EPCOT ENTRANCE DRIVE, THEY MAKE A 180 DEGREE TURN TO THE RIGHT AT THE TURNAROUND POINT, AND CONTINUE RUNNING EAST ON EPCOT CENTER DRIVE EASTBOUND.

FINISH (10k) - POINT IS IN EPCOT'S IMAGINE PARKING LOT, IN (OLD) ROW 60, (NEW) ROW 506, FACING NORTH. POINT IS 210.4 FEET EAST OF THE DRIVE AISLE THAT LIES WEST OF (OLD) ROW 60, (NEW) ROW 506. POINT IS IN THE 18TH PARKING SPACE EAST OF THE DRIVE AISLE AND 6 FEET NORTH OF THE SOUTH EDGE OF THE SOLID LINE OF THE ROW.

COURSE MEASURED ON 03/05/2021 BY TOM WARD, IAAF "B" MEASURER AND JONATHAN BRANSON, PLS JBRANSON@ACROMIC.COM 321-312-0787 CALIBRATION COURSE FL20009JK USED FOR THIS RACE COURSE

START MOVED TO ROW 612 and TURNAROUND ADJUSTED ACCORDINGLY by JONATHAN BRANSON 11-22-2022

WDW 10k 2023

LAKE BUENA VISTA, FLORIDA
 10k RACE DISTANCE

SHEET 1 of 5

SEE SHEET 1 for Overall Course

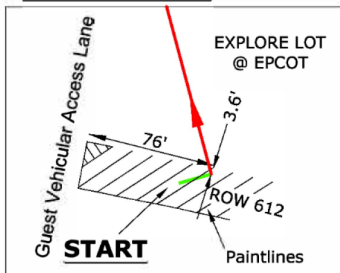
SEE SHEET 2 for START to MILE 0.7 MILE 1.5 to 5km MILE 5.4 to FINISH

SEE SHEET 3 for MILE 0.3 to MILE 2.3

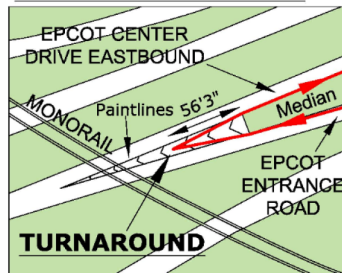
SEE SHEET 4 for MILE 2.4 to MILE 6.0

SEE SHEET 5 for KEYPOINTS

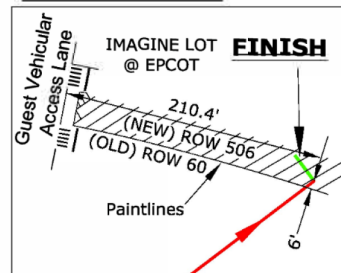
START DETAIL



TURNAROUND DETAIL



FINISH DETAIL

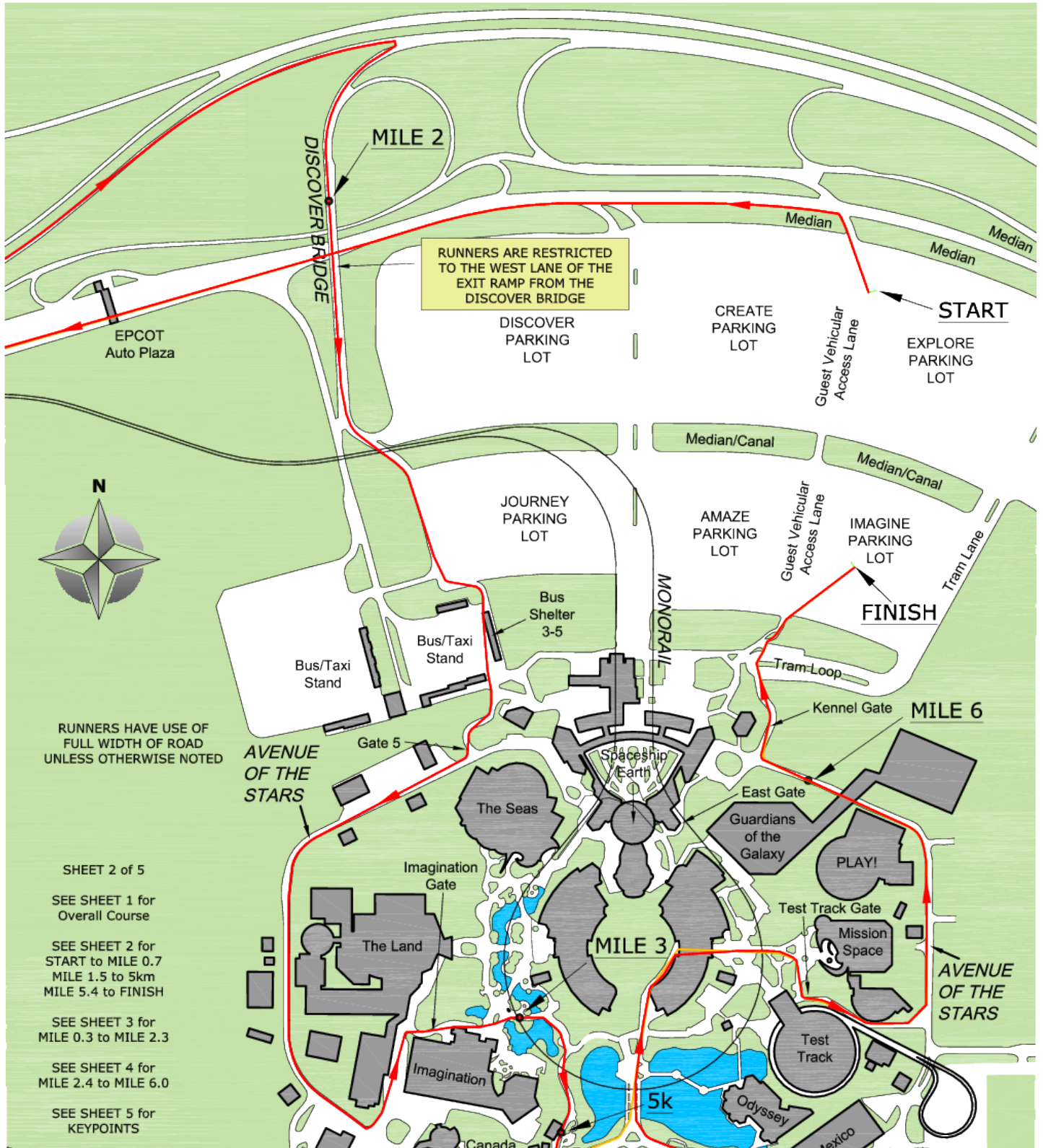


WDW 10k 2023

LAKE BUENA VISTA, FLORIDA
10k RACE DISTANCE

START to MILE 0.7
MILE 1.5 to 5km
MILE 5.4 to FINISH

COURSE MEASURED
ON 03/05/2021 BY
TOM WARD,
IAAF "B" MEASURER
AND
JONATHAN BRANSON, PLS
JBRANSON@ACROMIC.COM
321-312-0787
CALIBRATION COURSE
FL20009JK USED FOR THIS
RACE COURSE



RUNNERS HAVE USE OF FULL WIDTH OF ROAD UNLESS OTHERWISE NOTED

SHEET 2 of 5
SEE SHEET 1 for Overall Course
SEE SHEET 2 for START to MILE 0.7 MILE 1.5 to 5km MILE 5.4 to FINISH
SEE SHEET 3 for MILE 0.3 to MILE 2.3
SEE SHEET 4 for MILE 2.4 to MILE 6.0
SEE SHEET 5 for KEYPOINTS

WDW 10k 2023

LAKE BUENA VISTA, FLORIDA
10k RACE DISTANCE

MILE 0.3 to MILE 2.3

SHEET 3 of 5

SEE SHEET 1 for
Overall Course

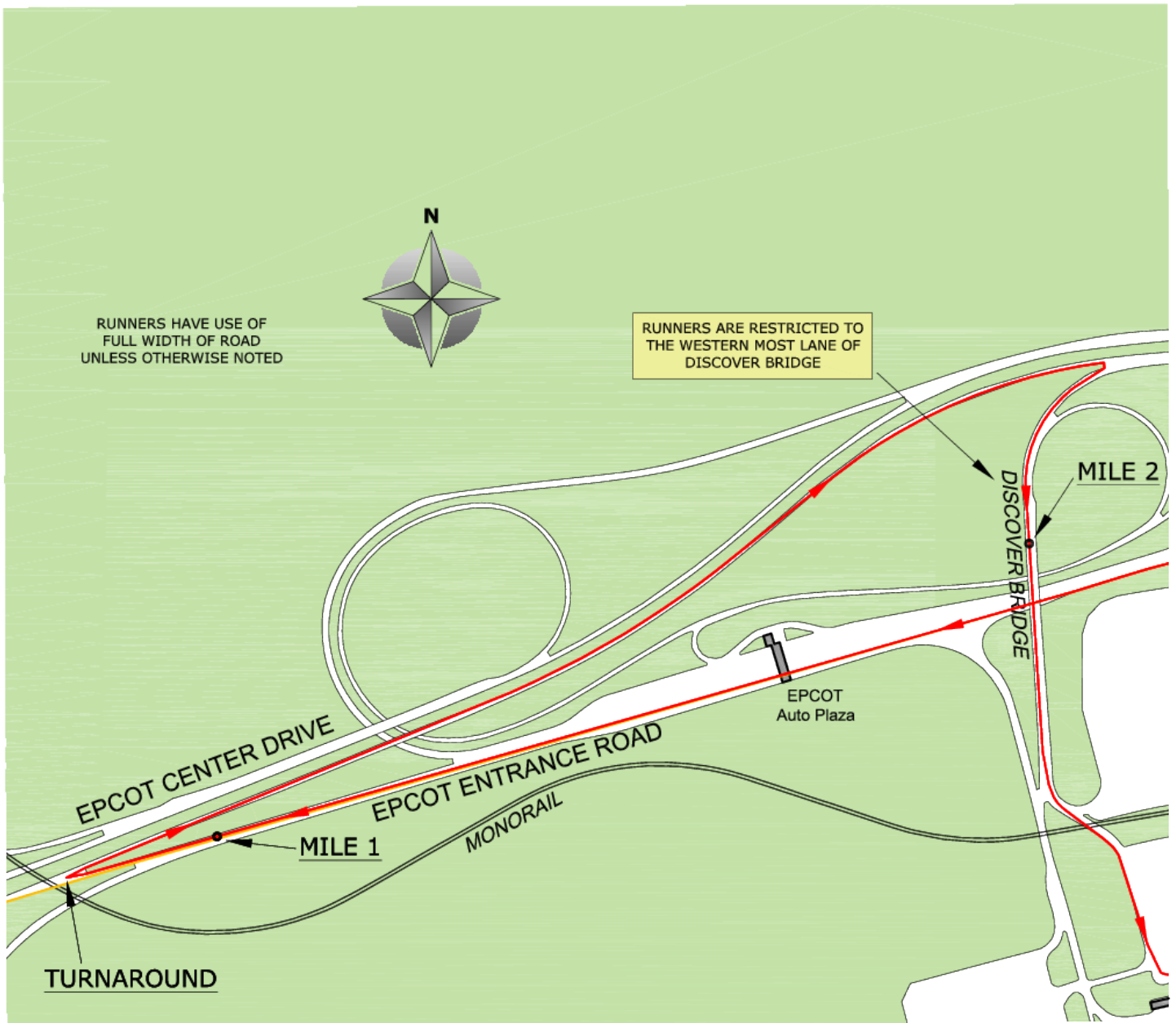
SEE SHEET 2 for
START to MILE 0.7
MILE 1.5 to 5km
MILE 5.4 to FINISH

SEE SHEET 3 for
MILE 0.3 to MILE 2.3

SEE SHEET 4 for
MILE 2.4 to MILE 6.0

SEE SHEET 5 for
KEYPOINTS

COURSE MEASURED
ON 03/05/2021 BY
TOM WARD,
IAAF "B" MEASURER
AND
JONATHAN BRANSON, PLS
JBRANSON@ACROMIC.COM
321-312-0787
CALIBRATION COURSE
FL20009JK USED FOR THIS
RACE COURSE



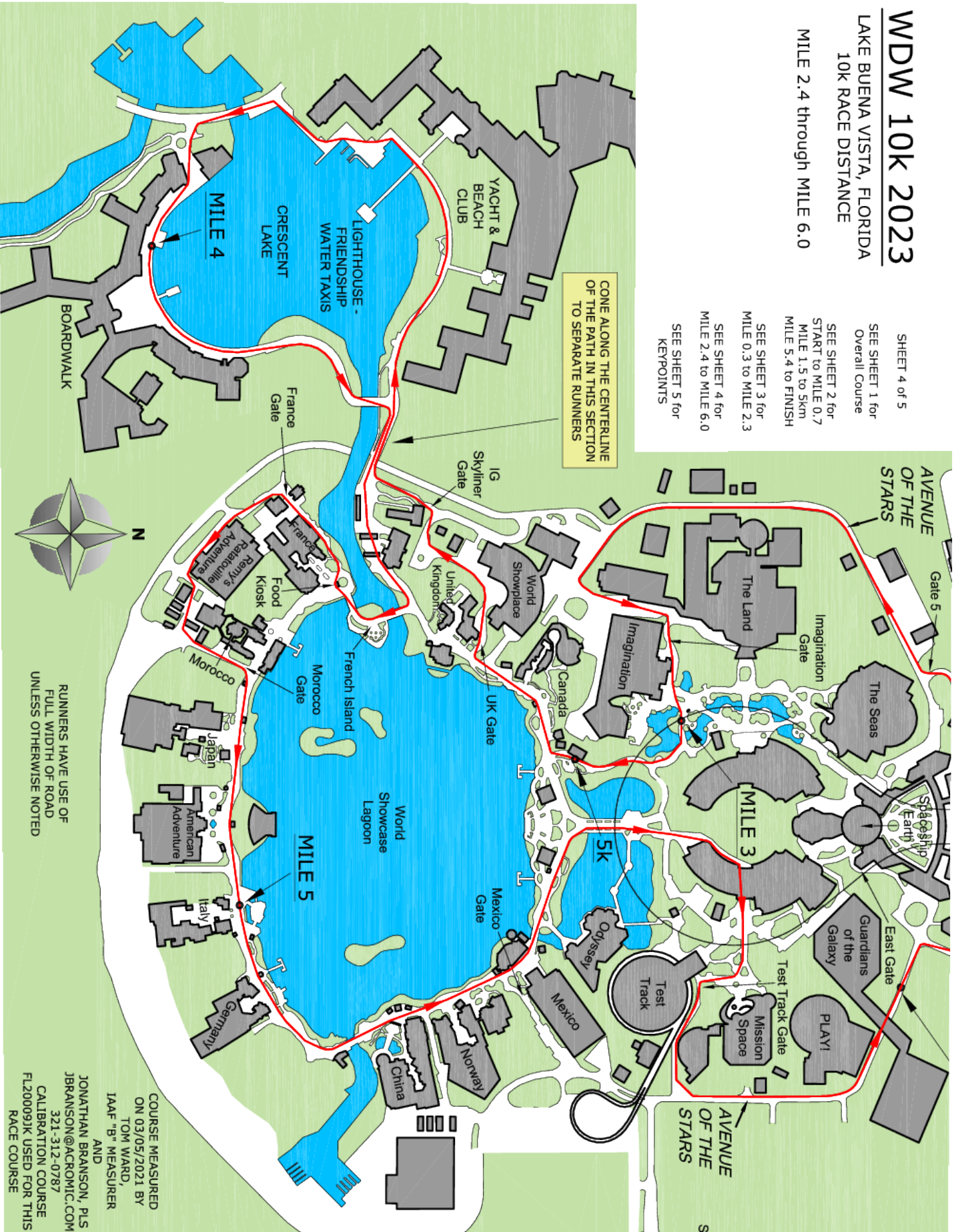
WDW 10K 2023

LAKE BUENA VISTA, FLORIDA
10K RACE DISTANCE

MILE 2.4 through MILE 6.0

SHEET 4 of 5
SEE SHEET 1 for Overall Course
SEE SHEET 2 for START to MILE 0.7
MILE 1.5 to 5km
MILE 5.4 to FINISH
SEE SHEET 3 for MILE 0.3 to MILE 2.3
SEE SHEET 4 for MILE 2.4 to MILE 6.0
SEE SHEET 5 for KEYPOINTS

GO AROUND THE CENTERLINE OF THE PATH IN THIS SECTION TO SEPARATE RUNNERS



RUNNERS HAVE USE OF FULL WIDTH OF ROAD UNLESS OTHERWISE NOTED

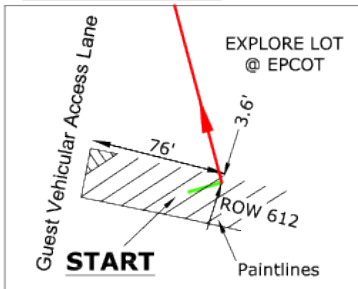
COURSE MEASURED ON 03/05/2021 BY TOM WARD, IAAF "B" MEASURER AND JONATHAN BRANSON, PLS JBRANSON@ACROMIC.COM 321-312-0787 CALIBRATION COURSE FL20009JK USED FOR THIS RACE COURSE

WDW 10k 2023

LAKE BUENA VISTA, FLORIDA
10k RACE DISTANCE

WDW 10k 2023 KEYPOINTS

START DETAIL



START – POINT IS IN EPCOT’S EXPLORE PARKING LOT, ROW 612, FACING NORTH. POINT IS IN THE 6th PARKING SPACE FROM EAST EDGE OF THE DRIVE AISLE LYING WEST OF ROW 612. POINT IS 3.6 FEET SOUTH OF THE NORTH EDGE OF ROW 612. POINT IS 76 FEET EAST OF THE EAST EDGE OF THE DRIVE AISLE LYING WEST OF ROW 612. POINT IS MARKED WITH A NAIL AND DISC.

1 MILE – POINT IS ON NORTH EDGE OF EPCOT ENTRANCE DRIVE, FACING WEST. POINT IS 21 FEET EAST OF (BEFORE) LIGHT POLE E56 (ON SOUTH SIDE OF ROAD).

TURNAROUND – POINT IS AT ROAD SPLIT FOR EPCOT CENTER DRIVE EASTBOUND AND EPCOT ENTRANCE DRIVE. POINT IS 56 FEET, 3 INCHES WEST OF THE GRASS MEDIAN IN BETWEEN THE ROAD SPLIT. RUNNERS APPROACH THE TURNAROUND POINT RUNNING WEST ON EPCOT ENTRANCE DRIVE, THEY MAKE A 180 DEGREE TURN TO THE RIGHT AT THE TURNAROUND POINT, AND CONTINUE RUNNING EAST ON EPCOT CENTER DRIVE EASTBOUND.

2 MILE – POINT IS IN CENTER OF DISCOVER BRIDGE, FACING SOUTH. POINT IS 59.6 FEET NORTH OF (BEFORE) NORTH EDGE OF BRIDGE SEAM (ASPHALT/CONCRETE TRANSITION).

3 MILE – POINT IS ON PATHWAY BETWEEN THE IMAGINATION PAVILION AT EPCOT AND THE ROSE GARDEN PATH, FACING EAST. POINT IS 26.2 FEET EAST OF (AFTER) MONORAIL BEAM.

5k – POINT IS ON ROSE GARDEN PATH IN EPCOT, FACING SOUTH. POINT IS IN LINE WITH COLUMN AT BATHROOM WITH “WOMEN’S” SIGN. BATHROOM IS BUILDING DIRECTLY NORTH OF STARBUCKS.

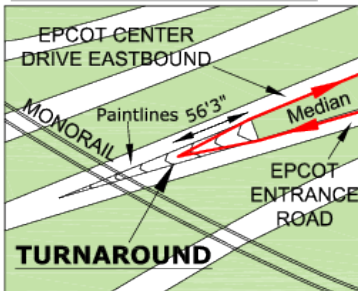
4 MILE – POINT IS ON NORTH EDGE OF BOARDWALK PATH AROUND CRESCENT LAKE, AT THE BOARDWALK RESORT, FACING EAST. POINT IS 13.6 FEET WEST OF (BEFORE) CENTER OF DOUBLE DOOR ENTRANCE TO “THIMBLES & THREADS” GIFT SHOP.

5 MILE – POINT IS ON PATHWAY AROUND WORLD SHOWCASE LAGOON IN THE ITALY PAVILION AT EPCOT, FACING EAST. POINT IS 25.4 FEET EAST OF (AFTER) CENTER OF WINDOW FOR “GELATERIA TOSCANNA” ICE CREAM SHOP.

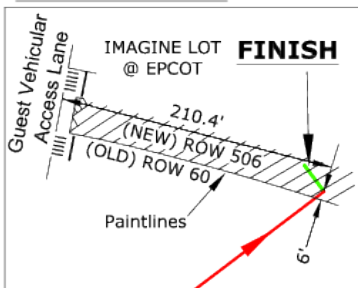
6 MILE – POINT IS ON NORTH EDGE OF AVENUE OF THE STARS, WEST OF (AFTER) OVERHEAD BRIDGE OF GUARDIANS OF THE GALAXY ATTRACTION, FACING WEST. POINT IS IN LINE WITH FIRE DEPARTMENT CONNECTION (WITH GUARDING BOLLARDS) ON NORTH SIDE OF ROAD.

FINISH (10k) – POINT IS IN EPCOT’S IMAGINE PARKING LOT, IN (OLD) ROW 60, (NEW) ROW 506, FACING NORTH. POINT IS 210.4 FEET EAST OF THE DRIVE AISLE THAT LIES WEST OF (OLD) ROW 60, (NEW) ROW 506. POINT IS IN THE 18TH PARKING SPACE EAST OF THE DRIVE AISLE AND 6 FEET NORTH OF THE SOUTH EDGE OF THE SOLID LINE OF THE ROW.

TURNAROUND DETAIL



FINISH DETAIL



SHEET 5 of 5

SEE SHEET 1 for
Overall Course

SEE SHEET 2 for
START to MILE 0.7
MILE 1.5 to 5km
MILE 5.4 to FINISH

SEE SHEET 3 for
MILE 0.3 to MILE 2.3

SEE SHEET 4 for
MILE 2.4 to MILE 6.0

SEE SHEET 5 for
KEYPOINTS

RUNNERS HAVE USE OF
FULL WIDTH OF ROAD
UNLESS OTHERWISE NOTED

COURSE MEASURED
ON 03/05/2021 BY
TOM WARD,
IAAF "B" MEASURER
AND
JONATHAN BRANSON, PLS
JBRANSON@ACROMIC.COM
321-312-0787
CALIBRATION COURSE
FL20009JK USED FOR THIS
RACE COURSE