



**Road Running Technical Council
USA Track & Field
Measurement Certificate**



Name of the course Haunted Forest Marathon Distance 42.195 km
Location (state) OH (city) Canal Fulton
Type of course: Road Race
Measuring Methods: Bicycle
Measured By Jim Chaney - 900 Lynbrook St SE - North Canton, OH 44720 - (330) 687-1519 - racedirector@hofmarathon.co
Race Contact Jim Chaney - 132 5th St NW, Canton OH 44702 - 330-687-1519
Date(s) when course measured: 10/20/2021, 10/21/2021
Number of measurements of entire course: 2 Course Configuration: several out/back sections
Elevation (meters above sea level) Start 289.86 Finish 285.90 Lowest 285.9 Highest 306.32
Straight line distance between start and finish 139 m Drop 0.09 m/km Separation 0.33 %
Type of surface: Paved 45 % Dirt 0 % Gravel 55 % Grass 0 % Track 0 %
Effective date of certification: November 3, 2021 Certification code: OH21020DH

Note to Race Director: Use this Certification Code
in all public announcements relating to your race.

Be It Officially Noted That

Based on examination of data provided by the above named measurer, the course described above and in the map attached is hereby certified as reasonably accurate in measurement according to the standards adopted by the Road Running Technical Council. If any changes are made to the course, this certification becomes void, and the course must then be recertified.

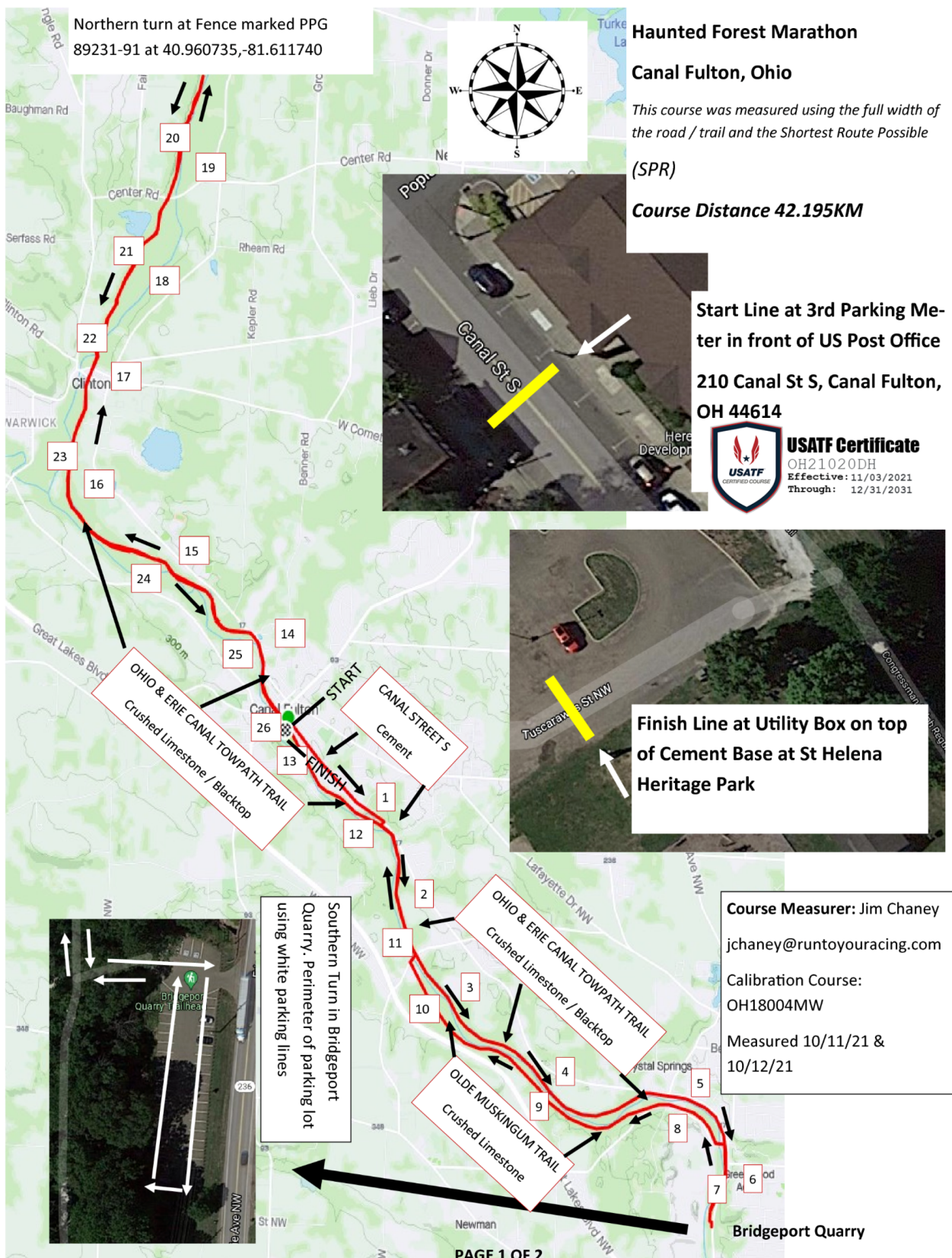
Verification of Course --- In the event a National Open Record is set on the course, or at the discretion of USA Track & Field, a verification measurement may be required to be performed by a member of the Road Running Technical Council. If such a remeasurement shows the course to be short, then all pending records will be rejected and the course certification will be cancelled.

This certification expires on December 31 of the year: **2031**

AS NATIONALLY CERTIFIED BY:

Date: November 15, 2021

David Heithaus - USATF/RRTC Certifier - 23000 Caves Road, Gambier OH 43022
(928) 210-7578 - heithausd@kenyon.edu



Start - US Post office in Canal Fulton - 210 Canal St N, Canal Fulton, OH 44614 - 3rd parking meter on the WEST side of the building

Mile 1 – Erie Ave NW 6’2” South of Millfield Rd NW

Mile 2 – Towpath Trail South of Lock 4, 40’8” South of Cement Bench

Mile 3 – Towpath Trail South of Butterbridge Rd NW, 308 yards North of Towpath Marker 6.

Mile 4 – Towpath Trail South of Butterbridge Rd NW, parallel to 4601 Erie Ave NW, Canal Fulton, OH 44614

Mile 5 – Towpath Trail 62’ 9” North of High Mill Ave NW

Mile 6 – Towpath Trail South of Forty Corners Rd NW directly across from Traphagen St NW next to the only tree on the East

Mile 7 – Towpath Trail South of Forty Corners Rd NW, 12’2” North of the Boulder run-off field next to Erie Ave NW on the West side of the Towpath

Mile 8 – Olde Muskingum Trail 322’6” North of High Mill Ave NW

Mile 9 – Olde Muskingum Trail 513’ 9” North of Mile Post 4

Mile 10 – Olde Muskingum Trail South of Butterbridge Rd NW. 29’3” South of Fence Line with marker 32973-1 on the Yellow Sign.

Mile 11 – Towpath Trail North of Butterbridge Rd NW. 46’2” South of Mile Post 5.

Mile 12 – Towpath Trail next to Lock 4. 70’7” North of the blacktop connector trail from the parking lot.

Mile 13 – Towpath Trail South of St Helena Heritage Park. Directly next to the end of the Baseball Field Visitor Dugout South of the pavilion.

Mile 14 – Towpath Trail 20 yards South of Mile Post 2 just North of Lake Lucerne Trailhead.

Mile 15 – Towpath Trail 20 yards South of Mile Post 1 North of Lake Lucerne Trailhead.

Mile 16 – Towpath Trail 58’9” North of the Stark County / Summit County Line.

Mile 17 – Towpath Trail as you cross Main St in Clinton. Right at the entrance back onto the Towpath.

Mile 18 – Towpath Trail at 40.940432,-81.623085

Mile 19 – Towpath Trail past Mile Post 50 North of Center Road at 40.953034,-81.615327

Mile 19.55 – 180 degree Turnaround on Towpath Trail – Next to Fence marked PPG 89231-91 at 40.960735,-81.611740

Mile 20 – Towpath Trail North of Mile Post 50 at 40.954985,-81.614868

Mile 21 – Towpath Trail South of Center Road at 40.942502,-81.621823

Mile 22 – Towpath Trail North of Bridge that crosses the Tuscarawas River at 40.931201,-81.628793

Mile 23 – Towpath Trail North of Mile Post 53 at 40.917598,-81.634003

Mile 24 – Towpath Trail North of Lake Lucerne Trailhead. 19’6” South of Bench at 40.907645,-81.623494

Mile 25 – Towpath Trail North of Lake Lucerne Trailhead at 40.899950,-81.609132. On the map near Kepler Ave NW.

Mile 26 – Towpath Trail North of Market St. 32’9” North of Market St in the Parking Lot / Trail.

Finish Line – Parking Lot at St Helena Heritage Park. Directly next to the Utility Box with the Cement Base against the field.