



**Road Running Technical Council  
USA Track & Field  
Measurement Certificate**



Name of the course Adirondack Marathon - Alternate Distance 42.195 km  
Location (state) NY (city) Schroon Lake  
Type of course: Road Race  
Measuring Methods: Bicycle  
Measured By Jim Gilmer, 232 Van Wies Point Rd, Glenmont, NY 12077  
Race Contact Joel Friedman, Adirondack Marathon, PO Box 583, Schroon Lake, NY 12870  
Date(s) when course measured: 06/11/2021; Adj. 07/28/2021  
Number of measurements of entire course: 2 Course Configuration: Keyhole  
Elevation (meters above sea level) Start 259.99 Finish 259.69 Lowest 245.06 Highest 356.62  
Straight line distance between start and finish 295.05m Drop 0.01 m/km Separation 0.70 %  
Type of surface: Paved 100 % Dirt 0 % Gravel 0 % Grass 0 % Track 0 %  
Effective date of certification: September 3, 2021 Certification code: NY21012JG

Note to Race Director: Use this Certification Code  
in all public announcements relating to your race.

## ***Be It Officially Noted That***

Based on examination of data provided by the above named measurer, the course described above and in the map attached is hereby certified as reasonably accurate in measurement according to the standards adopted by the Road Running Technical Council. If any changes are made to the course, this certification becomes void, and the course must then be recertified.

**Verification of Course ---** In the event a National Open Record is set on the course, or at the discretion of USA Track & Field, a verification measurement may be required to be performed by a member of the Road Running Technical Council. If such a remeasurement shows the course to be short, then all pending records will be rejected and the course certification will be cancelled.

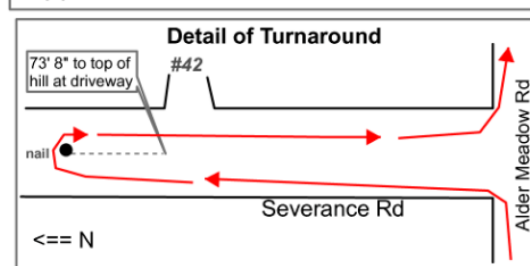
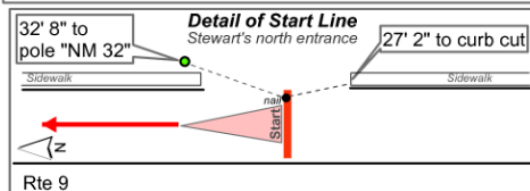
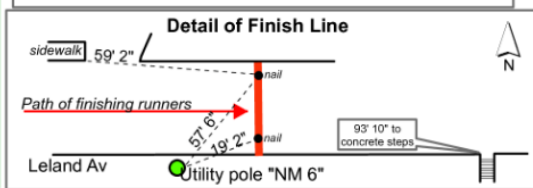
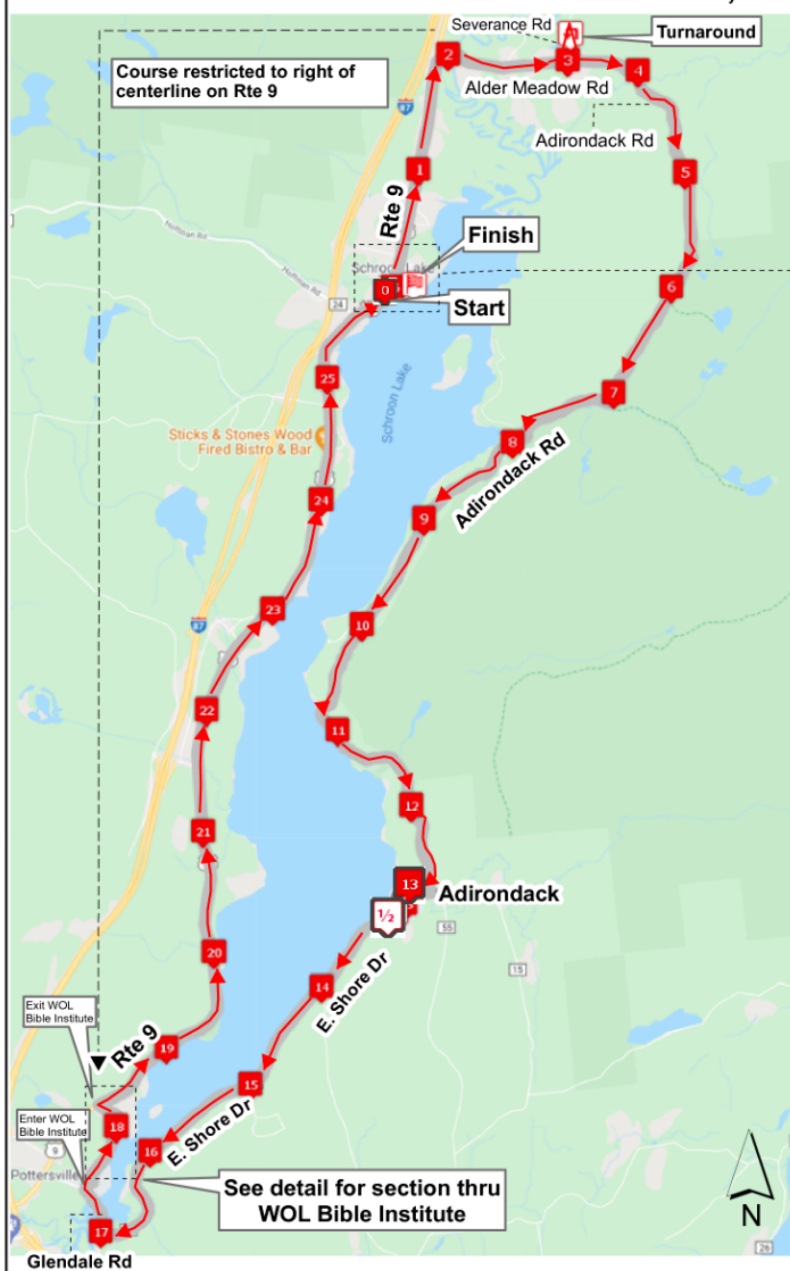
***This certification expires on December 31 of the year:*** **2031**

**AS NATIONALLY CERTIFIED BY:**

\_\_\_\_\_  
Date: September 3, 2021  
Jim Gilmer - USATF/RRTC Certifier - 232 Van Wies Point Rd, Glenmont NY 12077  
(518) 852-3562 - jim.gilmer@gmail.com

# Adirondack Marathon - Alternate

Schroon Lake, NY



**USATF Certificate**

NY21012JG

Effective: 09/03/2021

Through: 12/31/2031

Course Description: Adirondack Marathon - Alternate

Note: For the streets indicated below, runners are routed with traffic and are restricted to stay right of centerline. This include: Rte 9 outbound through M1-2 and inbound from M19-M26.

The Start of this keyhole course is on Rte 9 at the north entrance of Stewart's Shop in Schroon Lake village. The course proceeds north to M1 before turning R on Alder Meadow Rd, continuing through M2-M3 to L onto Severance Rd to the Turnaround point just below the top of the hill, and returning to L back on Alder Meadow Rd to M4. Continuing on Alder Meadow Rd, the course turns R on Adirondack Rd through M5-M12 before turning R onto E. Shore Dr at the hamlet of Adirondack, proceeding through M13-M17. At the end of E. Shore Dr, the course turn R on Glendale Rd, crossing the bridge over the Schroon Lake outlet, before turning R at the paved access drive for the WOL Bible Institute, where the course continues north in a direct path on unnamed interior campus roads to M18, after which it turns L through the "WOL Ranch" section of campus to R at Rte 9. The course then proceeds north on Rte 9 through M19-M25. Entering Schroon Lake village, the course continues through the Start line and M26 to R onto Leland Ave to the Finish.

Measured 6/11/21 by Jim Gilmer | World Athletics "A" Measurer | jim.gilmer@gmail.com | 518-852-3562; with Patrick Lynskey. Map by Jim Gilmer

Adirondack Marathon (Alternative Route) Key Points		
Point	Lat/Long (DD)	Description (described as course is run with points marked on right)
Start	43.835685°, -73.762011°	On Rte 9 at Stewart's Shop between curb cuts for N entrance. 27' 9" (direct) from N curb cut and 32' 8" (direct) from utility pole "NM 32" by S curb cut.
M1	43.849720°, -73.757682°	On Rte 9 at #1280, 25' 4" after utility pole "NG 30½" located at driveway for #1276.
M2	43.863228°, -73.752876°	On Alder Meadow Rd at Bridge St, 11' 1" before "STOP" sign.
M3	43.862630°, 73.733425°	On Alder Meadow Rd at #235, 50' 5" after utility pole "NM 25½" and 67' 0" before mailbox for #235.
Turnaround	43.865697°, -73.732874°	On Severance Rd, 13' 8" after top of hill at driveway for #42. [No other reference available.]
M4	43.061392°, -73.721941°	On Alder Meadow Rd (in wetlands), 290' 0" before utility pole "NG 30".
M5	43.849416°, -73.714074°	On Adirondack Rd, 56' after utility pole "NG 14   B214".
M6	43.035063°, -73.716297°	On Adirondack Rd, 132' 0" before "35 MFGI" sign on L.
M7	43.823425°, 73.725900°	On Adirondack Rd, GPS only; no reference available.
M8	43.817527°, -73.742343°	On Adirondack Rd at #373, 78' after sign for #373.
M9	43.808541°, -73.756916°	On Adirondack Rd at #559, 91' after driveway for #559.
M10	43.795946°, -73.766945°	On Adirondack Rd at #442, 31' before utility pole "NM 11   11 52   NY 1 7"
M11	43.783667°, -73.771041°	On Adirondack Rd at #231, 45' 3" before driveway for #221.
M12	43.774696°, -73.759013°	On Adirondack Rd approx. 240' after Essex Dr. [No other reference available.]
M13	43.763075°, -73.759744°	On E. Shore Dr at bath house for Adirondack Lodges, 9' 6" after E side of bog and 7' 6" before W side.
½ Marathon	43.762004°, -73.761395°	On E. Shore Dr at #312, even with chimney. [Start of Half Marathon, marked in yellow paint.]
M14	43.753252°, -73.773603°	On F. Shore Dr at #536, 2' 7" before driveway for #535.
M15	43.741728°, -73.785288°	On E. Shore Dr before Lakeview Dr, 56' 2" before "Blue Sky Estates" sign.
M16	43.733821°, -73.801662°	On E. Shore Dr at #213, 37' 6" after utility pole "NM 35".
M17	43.724327°, -73.809763°	On E. Shore Dr at Glendale Rd, 9' 6" before STOP sign.
M18	43.736766°, 73.807164°	On unnamed WOL campus road at ballfield, 9' 6" before "15 MPH" sign.
M19	43.746067°, -73.798908°	On Rte 9, after Sunshine Dr N and before Eagle Point, 5' 7" before utility pole "NM 55".
M20	43.757339°, -73.791302°	On Rte 9, between Eagle Point and Scaroon Manor Campground, 47' 2" after utility pole "NM82   248" and 50' 4" before highway marker "9   1/10   23/5".
M21	43.771505°, -73.792509°	On Rte 9, 75' 9" after utility pole "NG 112".
M22	43.785907°, 73.792347°	On Rte 9 approaching Bay Rd, 85' 4" before "Lions Club" sign.
M23	43.797912°, -73.781550°	On Rte 9 at Old Scaroon Rd, 64' after utility pole "NM 204".
M24	43.810726°, 73.773653°	On Rte 9 at # 643 ("Casey") across from "Adirondack Self Storage", approx 20' after address sign post.
M25	43.825133°, -73.772751°	On Rte 9 at #860, even with S edge of sidewalk, 61' 8" after Easy St sign and 24' 3" before curb cut.
M26	43.035950°, -73.762006°	On Rte 9 at #1072, 12' 0" after bike rack and 1' before park bench slab on R.
Finish	43.836166°, -73.758514°	On Leland Ave, 19' 2" (direct) from utility pole "NM 6" on R, approx 93' 10" before concrete steps to beach area.

All points marked with survey nail and ORANGE paint, except: ½ Marathon point marked in YELLOW paint and M3 & T/A in BLUE paint.

