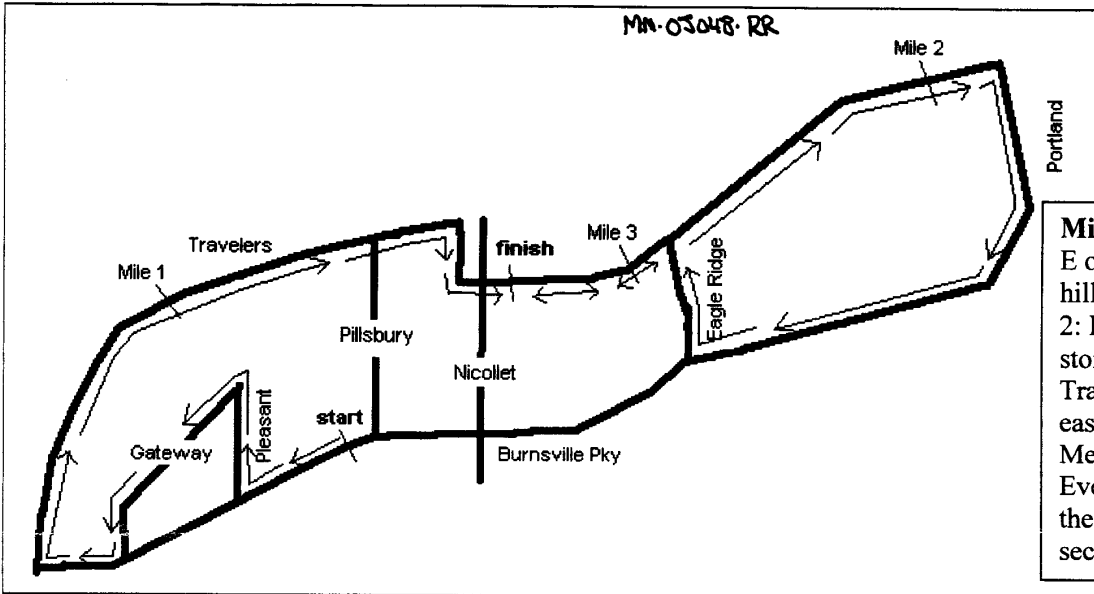
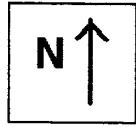


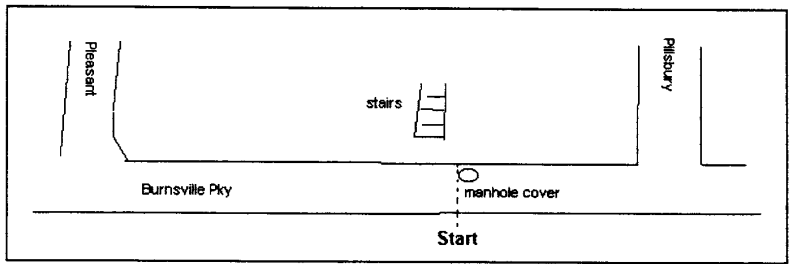
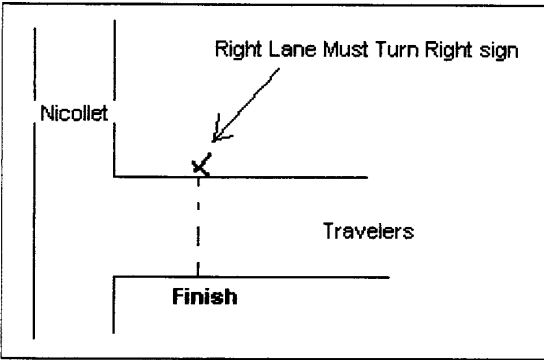
# Tender Hearts Foundation 5k

11/30/05

MM-0304B-RR



**Mile marks:** Mile 1: 41' E of drain at bottom of hill on Traveler. Mile 2: Even with W edge of stone wall on S side of Travelers, across from easternmost leg of Meadowood. Mile 3: Even with the W edge of the 2nd angle parking section from Nicollet.



**Course Description:** Start on Burnsville Pky heading W at the W edge of the manhole cover W of Pillsbury. Turn R on Pleasant. Turn L on Gateway. Turn R on Burnsville. Turn R on Travelers. Cross Nicollet. Turn R on Portland. Turn R on Burnsville. Turn R on Eagle Ridge. Turn L on Travelers. Finish is even with the "Right Lane Must Turn Right" sign, just E of Nicollet. **Restrictions:** All sections are curb-to-curb.

