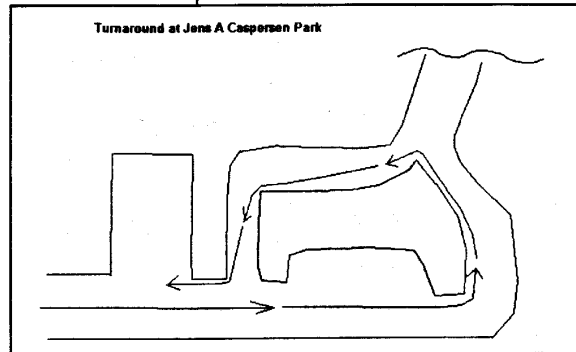
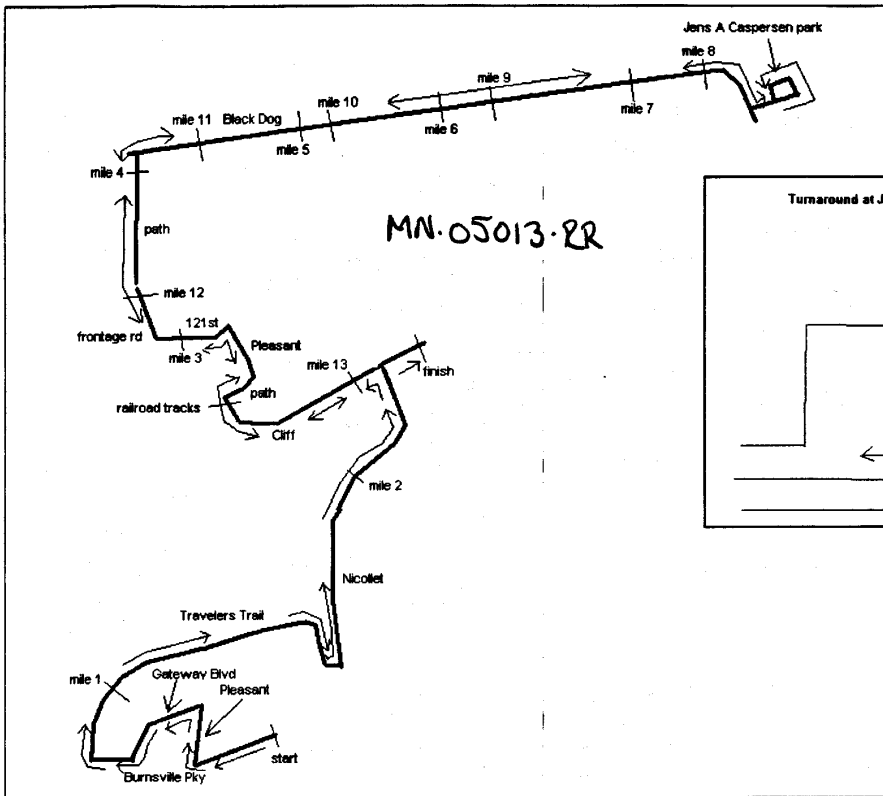
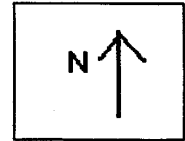
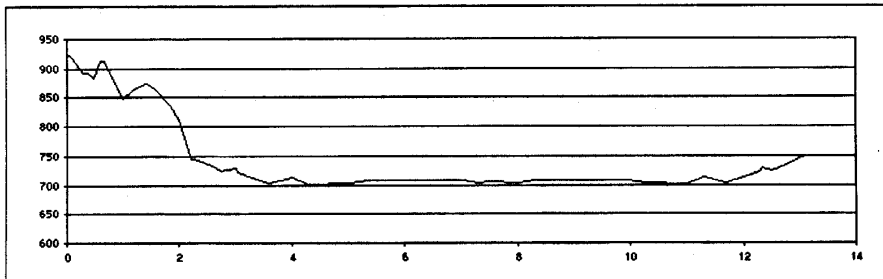
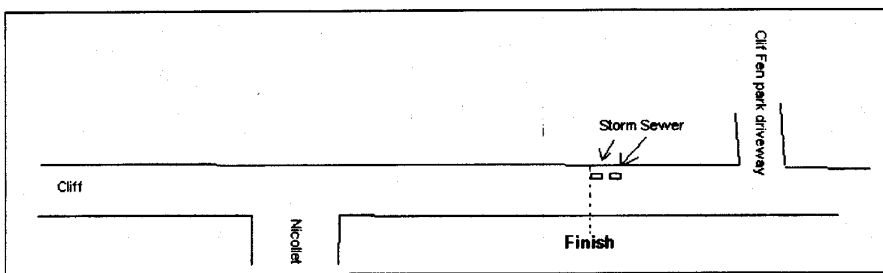
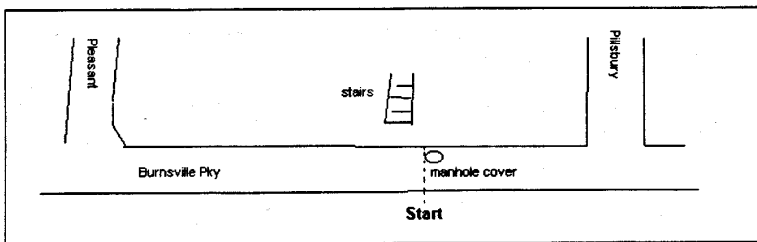


Burnsville Heart of the City Half Marathon

5/4/2005



- Mile 1: 41ft E of drain at bottom of hill on Traveler
- Mile 2: 74ft S of Wood Lake Dr on Nicollet
- Mile 3: midpoint between driveways of Isuzu dir on 121st
- Mile 4: 48ft S of post in path at Black Dog
- Mile 5: 224 ft E of W side of guard rail on N side of Black Dog
- Mile 6: 20ft W of W light pole in N side parking lot
- Mile 7: 91ft W of 3rd telephone E of telephone pole with lean-to
- Mile 8: 14ft W of 20mph curve sign
- Mile 9: 20ft E of pull off on S side of black dog E of plant
- Mile 10: 334ft E of wildlife observation area sign
- Mile 11: 229 ft E of E end of guard rail on S side of Black Dog by bridge
- Mile 12: 53 ft S of 4th telephone pole on path
- Mile 13: 2nd fire hydrant on N side of Cliff W of Nicollet



Measured by Eric Paulson - 651-455-6327 - epaulson@pmlink.com

Course Description: Start heading W on Burnsville Pky on the W edge of the manhole cover W of Pillsbury. Turn N on Pleasant. Turn W on Gateway, Turn W on Burnsville. Turn N on Travelers. Turn N on Nicollet. Turn W on Cliff. Take path to E just after crossing tracks. Path turns into Pleasant. Turn W on 121st. Turn N on Frontage. Frontage turns into path. Turn E on Black Dog. Turnaround at Jens Caspersen park by following outermost loop counterclockwise. Return on same path to Cliff. Finish is on Cliff at the W-most edge of the W-most storm sewer between Cliff Fen Park and Nicollet. **Restrictions:** E side of Nicollet. Nmost lane of Cliff