



**Road Running Technical Council
USA Track & Field
Measurement Certificate**



Name of the course runDisney Marathon 2025 Distance 42.195 km
Location (state) FL (city) Lake Buena Vista
Type of course: Road Race
Measuring Methods: Bicycle
Measured By Jonathan Branson - 50 Lakeview Reserve Blvd - Winter Garden, FL 34787 - (321) 312-0787 - jbranson@acroi
Race Contact Jon Hughes - 1013 Montana Street Orlando, FL 32803 - 407-896-1160 - info@trackshack.com
Date(s) when course measured: 09/16/2024, 09/17/2024
Number of measurements of entire course: 2 Course Configuration: partial loop
Elevation (meters above sea level) Start 29.87 Finish 31.39 Lowest 24.69 Highest 37.19
Straight line distance between start and finish 452.93 m Drop -0.04 m/km Separation 1.07 %
Type of surface: Paved 100 % Dirt 0 % Gravel 0 % Grass 0 % Track 0 %
Effective date of certification: December 12, 2024 Certification code: FL24027JK

Note to Race Director: Use this Certification Code
in all public announcements relating to your race.

Be It Officially Noted That

Based on examination of data provided by the above named measurer, the course described above and in the map attached is hereby certified as reasonably accurate in measurement according to the standards adopted by the Road Running Technical Council. If any changes are made to the course, this certification becomes void, and the course must then be recertified.

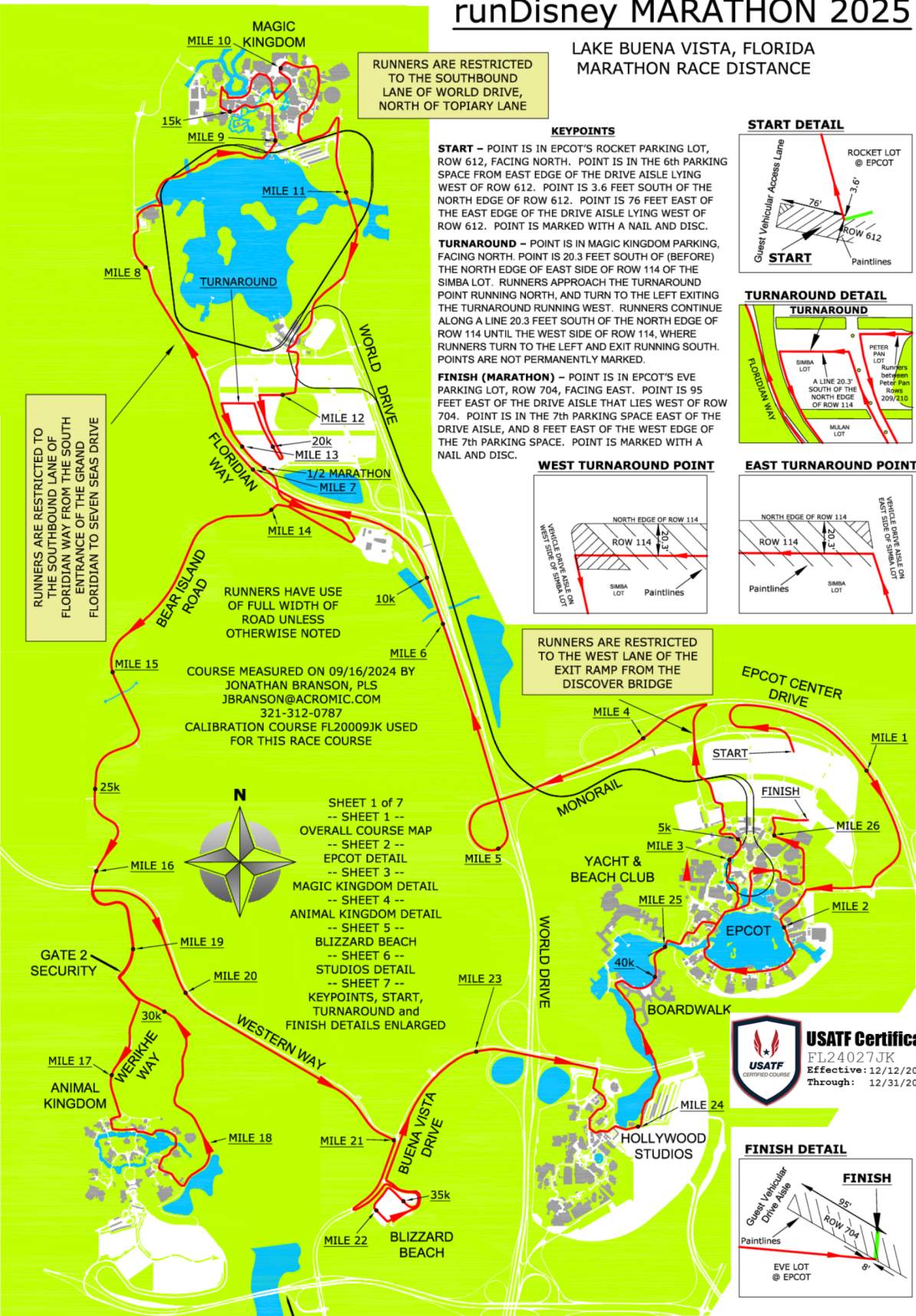
Verification of Course --- In the event a National Open Record is set on the course, or at the discretion of USA Track & Field, a verification measurement may be required to be performed by a member of the Road Running Technical Council. If such a remeasurement shows the course to be short, then all pending records will be rejected and the course certification will be cancelled.

This certification expires on December 31 of the year: **2034**

AS NATIONALLY CERTIFIED BY:

Date: December 13, 2024

Justin Kuo - USATF/RRTC Certifier - 39 Oakland Rd, Brookline MA 02445
(617) 487-4463 - jkuo+certifier@usatfne.org



runDisney MARATHON 2025

LAKE BUENA VISTA, FLORIDA
MARATHON RACE DISTANCE EPCOT DETAIL

COURSE MEASURED ON 09/16/2024 BY
JONATHAN BRANSON, PLS
JBRANSON@ACROMIC.COM
321-312-0787
CALIBRATION COURSE FL20009JK USED
FOR THIS RACE COURSE

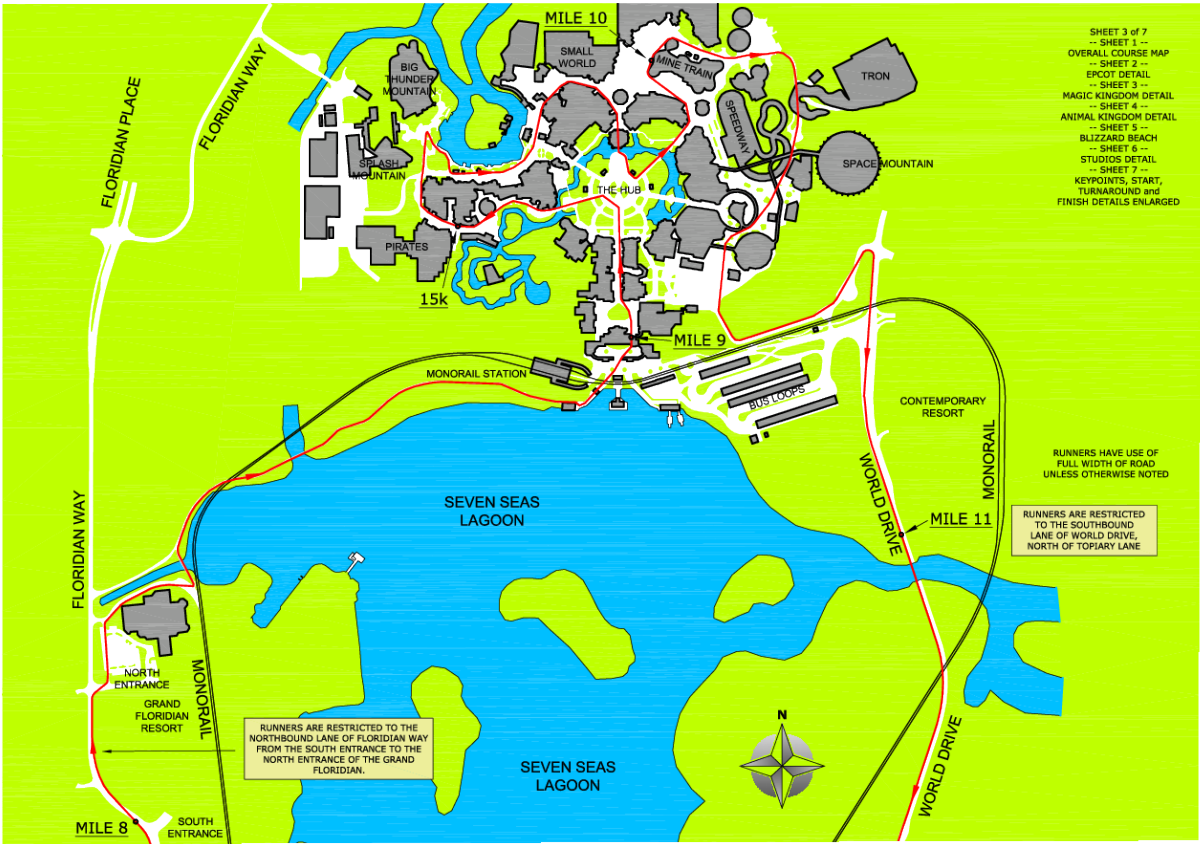


runDisney MARATHON 2025

LAKE BUENA VISTA, FLORIDA
MARATHON RACE DISTANCE

MAGIC KINGDOM DETAIL

COURSE MEASURED ON 09/16/2024 BY
JONATHAN BRANSON, PLS
JBRANSON@ACKROW.COM
321-312-0787
CALIBRATION COURSE FL2009JK USED
FOR THIS RACE COURSE

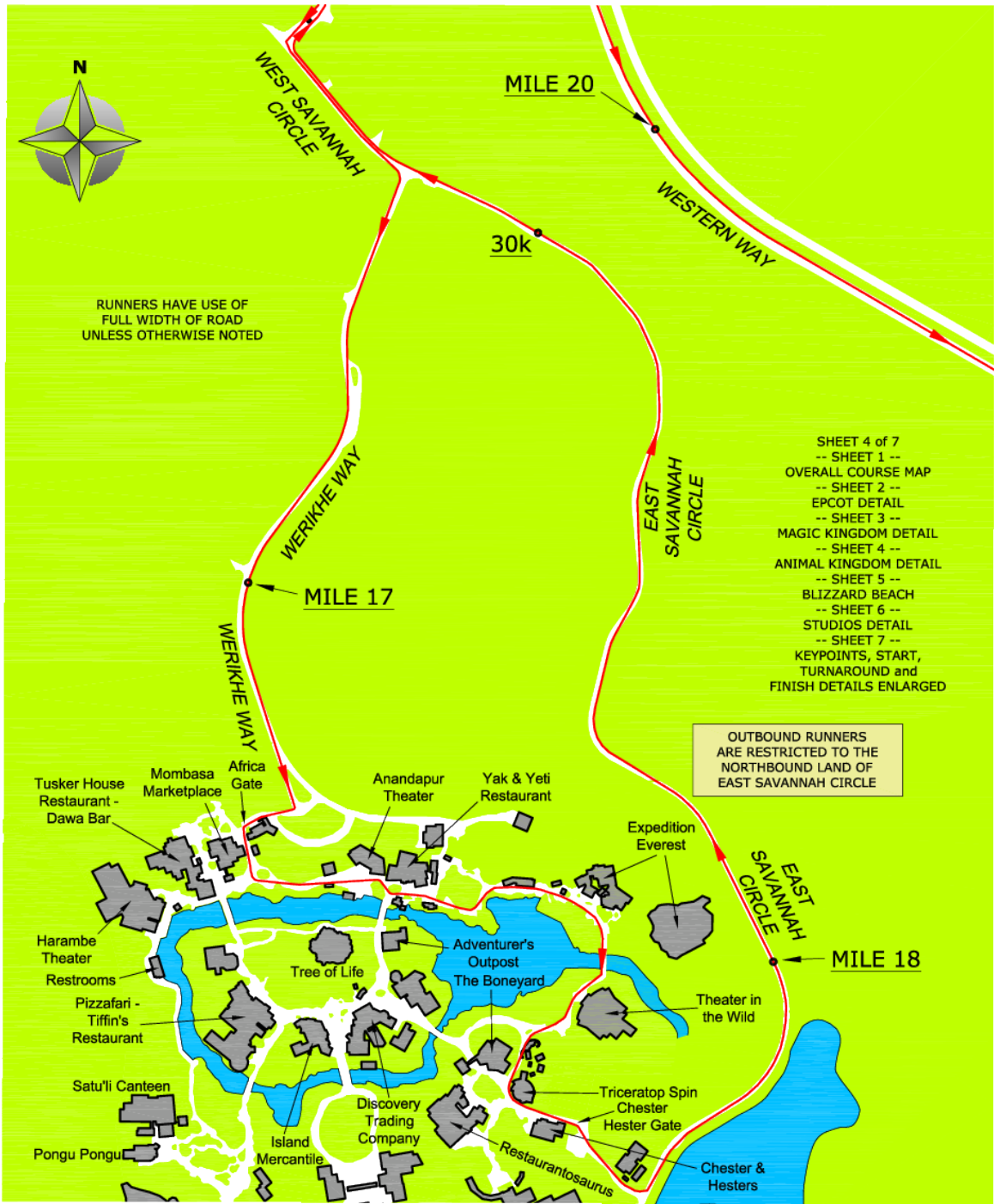


runDisney MARATHON 2025

LAKE BUENA VISTA, FLORIDA
MARATHON RACE DISTANCE

COURSE MEASURED ON 09/16/2024 BY
JONATHAN BRANSON, PLS
JBRANSON@ACROMIC.COM
321-312-0787
CALIBRATION COURSE FL20009JK USED
FOR THIS RACE COURSE

ANIMAL KINGDOM DETAIL



runDisney MARATHON 2025

LAKE BUENA VISTA, FLORIDA
MARATHON RACE DISTANCE BLIZZARD BEACH DETAIL

COURSE MEASURED ON 09/16/2024 BY
JONATHAN BRANSON, PLS
JBRANSON@ACROMIC.COM
321-312-0787
CALIBRATION COURSE FL20009JK USED
FOR THIS RACE COURSE



runDisney MARATHON 2025

LAKE BUENA VISTA, FLORIDA
MARATHON RACE DISTANCE

STUDIOS DETAIL

COURSE MEASURED ON 09/16/2024 BY
JONATHAN BRANSON, PLS
JBRANSON@ACROMIC.COM
321-312-0787
CALIBRATION COURSE FL20009JK USED
FOR THIS RACE COURSE



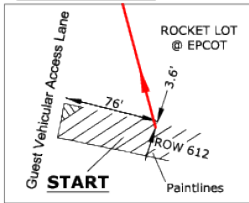
runDisney MARATHON 2025

LAKE BUENA VISTA, FLORIDA MARATHON RACE DISTANCE

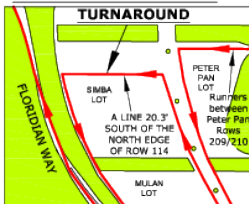
COURSE MEASURED ON 09/16/2024 BY
JONATHAN BRANSON, PLS
JBRANSON@ACROMIC.COM
321-312-0787
CALIBRATION COURSE FL20009JK USED
FOR THIS RACE COURSE

KEYPOINTS

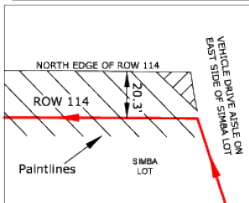
START DETAIL



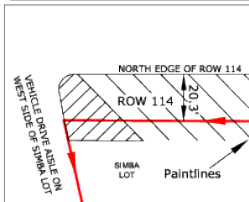
TURNAROUND DETAIL



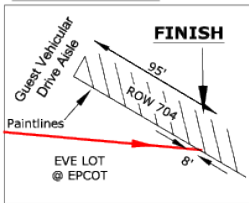
EAST TURNAROUND POINT



WEST TURNAROUND POINT



FINISH DETAIL



START - POINT IS IN EPCOT'S ROCKET PARKING LOT, ROW 612, FACING NORTH. POINT IS IN THE 6th PARKING SPACE FROM EAST EDGE OF THE DRIVE AISLE LYING WEST OF ROW 612. POINT IS 3.6 FEET SOUTH OF THE NORTH EDGE OF ROW 612. POINT IS 76 FEET EAST OF THE EAST EDGE OF THE DRIVE AISLE LYING WEST OF ROW 612. POINT IS MARKED WITH A NAIL AND DISC.

1 MILE - POINT IS ON SOUTH SIDE OF EPCOT CENTER DRIVE EASTBOUND, FACING EAST. POINT IS 63 FEET WEST OF (BEFORE) LIGHT POLE "ECD71". POINT IS MARKED WITH A NAIL AND DISC.

2 MILE - POINT IS ON EPCOT WORLD SHOWCASE PATH IN NORWAY, FACING SOUTH. POINT IS 38 FEET NORTH OF STATUE OF ODIN ON SOUTH SIDE OF STAVE CHURCH. POINT IS NOT PERMANENTLY MARKED.

3 MILE - POINT IS ON EAST PATH BETWEEN THE LAND AND THE SEAS IN EPCOT, DIRECTLY SOUTH OF THE SEAS, FACING NORTH. POINT IS 2.6 FEET SOUTH OF (BEFORE) THE CENTER OF MONORAIL COLUMN "209". POINT IS NOT PERMANENTLY MARKED.

5K - POINT IS BACKSTAGE EPCOT ON AVENUE OF THE STARS, SOUTH OF THE WEST LOT BREAK ROOM, FACING NORTHWEST. POINT IS 3.5 FEET SOUTHEAST OF (BEFORE) LIGHT POLE "A68". POINT IS NOT PERMANENTLY MARKED.

4 MILE - POINT IS ON EPCOT CENTER DRIVE EASTBOUND, FACING WEST. POINT IS 152 FEET EAST OF (BEFORE) LIGHT POLE "ECD 125". POINT IS MARKED WITH A NAIL AND DISC.

5 MILE - POINT IS ON EXIT RAMP FROM WORLD DRIVE SOUTHBOUND TO EPCOT CENTER DRIVE EASTBOUND, FACING EAST. POINT IS 11.5 WEST OF (BEFORE) LIGHT POLE "ECD 189". POINT IS MARKED WITH A NAIL AND DISC.

6 MILE - POINT IS ON WORLD DRIVE SOUTHBOUND, FACING NORTH. POINT IS 36.1 FEET SOUTH OF (BEFORE) LIGHT POLE "WDS58". POINT IS MARKED WITH A NAIL AND DISC.

10K - POINT IS ON WORLD DRIVE SOUTHBOUND, FACING NORTH. POINT IS 329.4 FEET NORTH OF THE SOUTH END OF THE GRASS MEDIAN SEPARATING MAGIC KINGDOM PARKING EXIT AND MAGIC KINGDOM RESORT EXIT. POINT IS MARKED WITH A NAIL AND DISC.

7 MILE - POINT IS ON FLORIDIAN WAY ON OVERPASS OVER MAGIC PARKING EXIT, FACING NORTH. POINT IS 180 FEET SOUTH OF (BEFORE) NORTH END OF CONCRETE GUARDWALL ON EAST SIDE OF THE ROAD. POINT IS MARKED WITH A NAIL AND DISC.

8 MILE - POINT IS ON FLORIDIAN WAY NEAR THE GRAND FLORIDIAN RESORT, FACING NORTH. POINT IS 33.1 FEET NORTH OF (AFTER) THE NORTH EDGE OF THE MAIN ENTRANCE TO THE GRAND FLORIDIAN. POINT IS MARKED WITH A NAIL AND DISC.

9 MILE - POINT IS IN MAGIC KINGDOM IN THE EAST BREEZEWAY, JUST PASSED THE STROLLER RENTALS LOCATION, FACING NORTH. POINT IS 4.10 FEET SOUTH OF (BEFORE) THE NORTH EDGE OF THE EAST BREEZEWAY WHERE THERE ARE TWO DIFFERENT COLORS OF PAVEMENT. POINT IS NOT PERMANENTLY MARKED.

15K - POINT IS IN MAGIC KINGDOM ON PATH FROM ADVENTURELAND, FACING WEST. POINT IS 40.8 FEET EAST OF (BEFORE) THE PIRATES OF THE CARIBBEAN SHIPMAST WITH THE BLACK FLAG.

10 MILE - POINT IS IN MAGIC KINGDOM ON PATH LEADING TO FANTASYLAND BETWEEN THE CAROUSEL AND BE OUR GUEST RESTAURANT, FACING NORTH. POINT IS 60 FEET SOUTH OF (BEFORE) THE BE OUR GUEST RESTAURANT ENTRANCE. POINT IS DIRECTLY EAST OF THE "ENCHANTED TALES WITH BELLE" SIGN.

11 MILE - POINT IS ON WORLD DRIVE SOUTHBOUND, FACING SOUTH. POINT IS 170.4 FEET NORTH OF (BEFORE) THE NORTH EDGE OF THE OVERHEAD WATERBRIDGE. POINT IS NOT PERMANENTLY MARKED.

12 MILE - POINT IS IN MAGIC KINGDOM PARKING, AT THE NORTHEAST CORNER OF PETER PAN LOT, FACING WEST. POINT IS 60.7 FEET EAST OF (BEFORE) EASTERN MOST PARKING SPOT OF ROW 209.

20K - POINT IS IN MAGIC KINGDOM PARKING, IN THE DRIVE AISLE ON THE EAST SIDE OF THE MULAN LOT, FACING NORTH. POINT IS 2.7 FEET NORTH OF (AFTER) THE SOUTH EDGE OF MULAN ROW 132.

TURNAROUND - POINT IS IN MAGIC KINGDOM PARKING, FACING NORTH. POINT IS 20.3 FEET SOUTH OF (BEFORE) THE NORTH EDGE OF EAST SIDE OF ROW 114 OF THE SIMBA LOT. RUNNERS APPROACH THE TURNAROUND POINT RUNNING NORTH, AND TURN TO THE LEFT EXITING THE TURNAROUND RUNNING WEST. RUNNERS CONTINUE ALONG A LINE 20.3 FEET SOUTH OF THE NORTH EDGE OF ROW 114 UNTIL THE WEST SIDE OF ROW 114, WHERE RUNNERS TURN TO THE LEFT AND EXIT RUNNING SOUTH. POINTS ARE NOT PERMANENTLY MARKED.

13 MILE - POINT IS IN MAGIC KINGDOM PARKING, IN THE DRIVE AISLE ON THE WEST SIDE OF THE MULAN LOT, FACING SOUTH. POINT IS 14.2 FEET SOUTH OF (AFTER) THE SOUTH EDGE OF ROW 131 IN MULAN LOT. POINT IS ON THE WEST SIDE OF DRIVE AISLE BY THE GRASS. POINT IS MARKED WITH A NAIL AND DISC.

HALF-MARATHON - POINT IS IN MAGIC KINGDOM PARKING IN THE DRIVE AISLE ON THE WEST SIDE OF THE MULAN LOT, FACING SOUTH. POINT IS 12.9 FEET NORTH OF (BEFORE) MULAN ROW 142. POINT IS MARKED WITH A NAIL AND DISC.

14 MILE - POINT IS ON BEAR ISLAND ROAD, FACING SOUTH. POINT IS 146 FEET SOUTH OF (AFTER) THE SOUTH EDGE OF THE NORTHBOUND TRAFFIC STOP BAR. POINT IS MARKED WITH NAIL AND DISC.

15 MILE - POINT IS ON BEAR ISLAND ROAD, FACING SOUTH. POINT IS 430 FEET SOUTH OF (AFTER) THE CENTER OF THE DRIVEWAY ENTRANCE TO GOLF COURSE MAINTENANCE FACILITY. THE ENTRANCE HAS A GREEN "GOLF COURSE MAINTENANCE SIGN ON RIGHT SIDE OF ENTRANCE. POINT IS MARKED WITH A NAIL AND DISC.

25K - POINT IS ON BEAR ISLAND ROAD, FACING SOUTH. POINT IS 47 FEET NORTH OF (BEFORE) LIGHT POLE B4.

16 MILE - POINT IS ON BEAR ISLAND ROAD, FACING SOUTH. POINT IS 86.9 FEET SOUTH OF (AFTER) STOP SIGN AT THE SOUTH EDGE OF PROPERTY CONTROL & CAST CONNECTION ENTRANCE. POINT IS MARKED WITH A NAIL AND DISC.

17 MILE - POINT IS IN BACKSTAGE AFRICA OF ANIMAL KINGDOM ON WERIKHE WAY, FACING SOUTH. POINT IS 8.7 FEET NORTH OF (BEFORE) NORTH EDGE OF 890 WERIKHE WAY BUILDING. POINT IS MARKED WITH A NAIL AND DISC.

18 MILE - POINT IS IN BACKSTAGE OF ANIMAL KINGDOM ON EAST SAVANNAH BEHIND, FACING NORTH. POINT IS 119.4 FEET NORTH OF (AFTER) RED HYDRANT HOSE HOOKUP. HYDRANT IS SOUTH OF THE EVEREST RIDE BUILDING AND HAS (2) RED BALLARDS SURROUNDING IT. POINT IS MARKED WITH A NAIL AND DISC.

30K - POINT IS IN BACKSTAGE OF ANIMAL KINGDOM ON EAST SAVANNAH CIRCLE, FACING NORTH. POINT IS 23.9 FEET SOUTH OF (BEFORE) SOUTH EDGE OF STOP BAR ACROSS FROM THE VET HOSPITAL. STOP BAR IS FOR NORTHBOUND TRAFFIC.

19 MILE - POINT IS ON BEAR ISLAND ROAD, FACING NORTH. POINT IS 100 FEET SOUTH OF (BEFORE) THE SOUTH EDGE OF THE LAVENDER (LIGHT PURPLE) WATER PIPE 1993. PIPE IS JUST SOUTH OF THE FIRST DRIVEWAY (COMING FROM GATE 2) INTO THE HORTICULTURE AREA. POINT IS MARKED WITH A NAIL AND DISC.

20 MILE - POINT IS ON WESTERN WAY EASTBOUND, FACING EAST. POINT IS 45.8 FEET EAST OF (AFTER) LIGHTPOLE WW72 WHICH IS IN CENTER MEDIAN. POINT NOT PERMANENTLY MARKED.

21 MILE - POINT IS ON WESTERN WAY EASTBOUND, FACING EAST. POINT IS 3FT AFTER TRAFFIC LIGHT BOX 46. TRAFFIC LIGHT BOX IS JUST BEFORE THE RIGHT STOP BAR FOR WESTERNWAY EASTBOUND TRAFFIC.

35K - POINT IS IN THE ENTRANCE DRIVE AISLE ON EAST SIDE OF BLIZZARD BEACH PARKING LOT, FACING NORTH. POINT IS 190.9 FEET NORTH OF (AFTER) THE NORTH TIP OF THE ENTRANCE TRIANGLE MEDIAN. POINT IS MARKED WITH A NAIL AND DISC.

22 MILE - POINT IS IN BLIZZARD BEACH PARKING, FACING SOUTH. POINT IS 83 FEET SOUTH OF (AFTER) NORTH EDGE OF AISLE 3. POINT IS IN THE 6th PARKING SPOT OF AISLE 3. POINT IS MARKED WITH A NAIL AND DISC.

23 MILE - POINT IS ON EAST BUENA VISTA DRIVE, FACING EAST. POINT IS 76.9 FEET EAST OF (AFTER) LIGHT POLE BVE 274. POINT IS MARKED WITH A NAIL AND DISC.

24 MILE - POINT IS ON STUDIOS PATH, LEADING UP TO MAIN ENTRANCE OF HOLLYWOOD STUDIOS, FACING EAST. POINT IS 42.6 FEET WEST OF (BEFORE) BALLARDS INLINE WITH FENCE AT EAST END OF SKYLINER HUB. POINT IS NOT PERMANENTLY MARKED.

40K - POINT IS ON BOARDWALK PATH HEADING TOWARDS INTERNATIONAL GATEWAY (EPCOT), FACING NORTH. POINT IS 29 FEET SOUTH OF (BEFORE) THE CENTER OF THE DOORS TO BOARDWALK ICE CREAM SHOP. POINT IS NOT PERMANENTLY MARKED.

25 MILE - POINT IS ON WALKWAY BRIDGE BETWEEN BOARDWALK AND INTERNATIONAL GATEWAY, FACING NORTHEAST. POINT IS INLINE WITH THE STONE PILARS AT THE SOUTH END OF BRIDGE. BRIDGE IS SOUTHEAST OF BEACH CLUB. POINT IS NOT PERMANENTLY MARKED.

26 MILE - POINT IS ON NORTH SIDE OF AVENUE OF THE STARS, AT THE INTERSECTION WITH THE ROAD LEADING TO KENNEL GATE, FACING NORTHWEST. POINT IS 54.0 FEET WEST OF (AFTER) PURPLE RECLAIMED WATER BACKFLOW PREVENTOR ON NORTH SIDE OF AVENUE OF THE STARS. POINT IS MARKED WITH A NAIL AND DISC.

FINISH (MARATHON) - POINT IS IN EPCOT'S EVE PARKING LOT, ROW 704, FACING EAST. POINT IS 95 FEET EAST OF THE DRIVE AISLE THAT LIES WEST OF ROW 704. POINT IS IN THE 7th PARKING SPACE EAST OF THE DRIVE AISLE, AND 8 FEET EAST OF THE WEST EDGE OF THE 7th PARKING SPACE. POINT IS MARKED WITH A NAIL AND DISC.